

HERETAUNGA HASTINGS

DISTRICT
COUNCIL



PUKETAPU COMMUNITY MEEITNG
MARCH 2024

**HERETAUNGA
HASTINGS**



NAU MAI, WHAKATAU MAI

CR KEVIN WATKINS & Tira Lee-Kirk

PUKETAPU COMMUNITY MEETING

AGENDA

- 1. Introduction**
- 2. Puketapu Bridge Project**
- 3. Puketapu Village safety improvements**
- 4. Puketapu Area slip repair**
- 5. HB Trails Great Ride update**
- 6. Puketapu Park project**
- 7. Questions**

**HERETAUNGA
HASTINGS**

CYCLONE RECOVERY - HASTINGS DISTRICT OVERVIEW

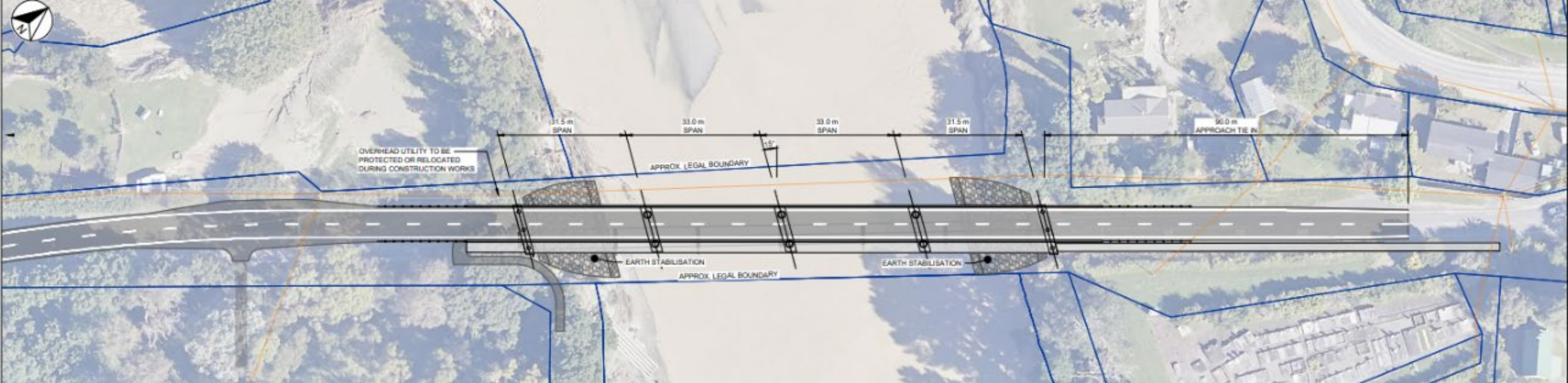


**HERETAUNGA
HASTINGS**

PUKETAPU BRIDGE UPDATE

Luke Leadbetter





DESIGN & CONSTRUCTION UPDATE

- Demolition of the old bridge
- Tender process and contract awarded for ECI (Fulton Hogan)
- Multiple design, procurement, and planning discussions with the contractors
- Substructure prelim design completed
- Substructure, geotechnical and abutment detailed designs with peer reviewer for feedback

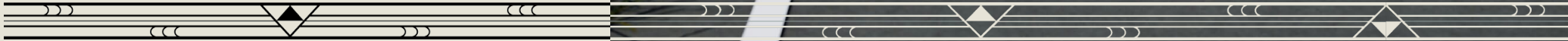


WSP



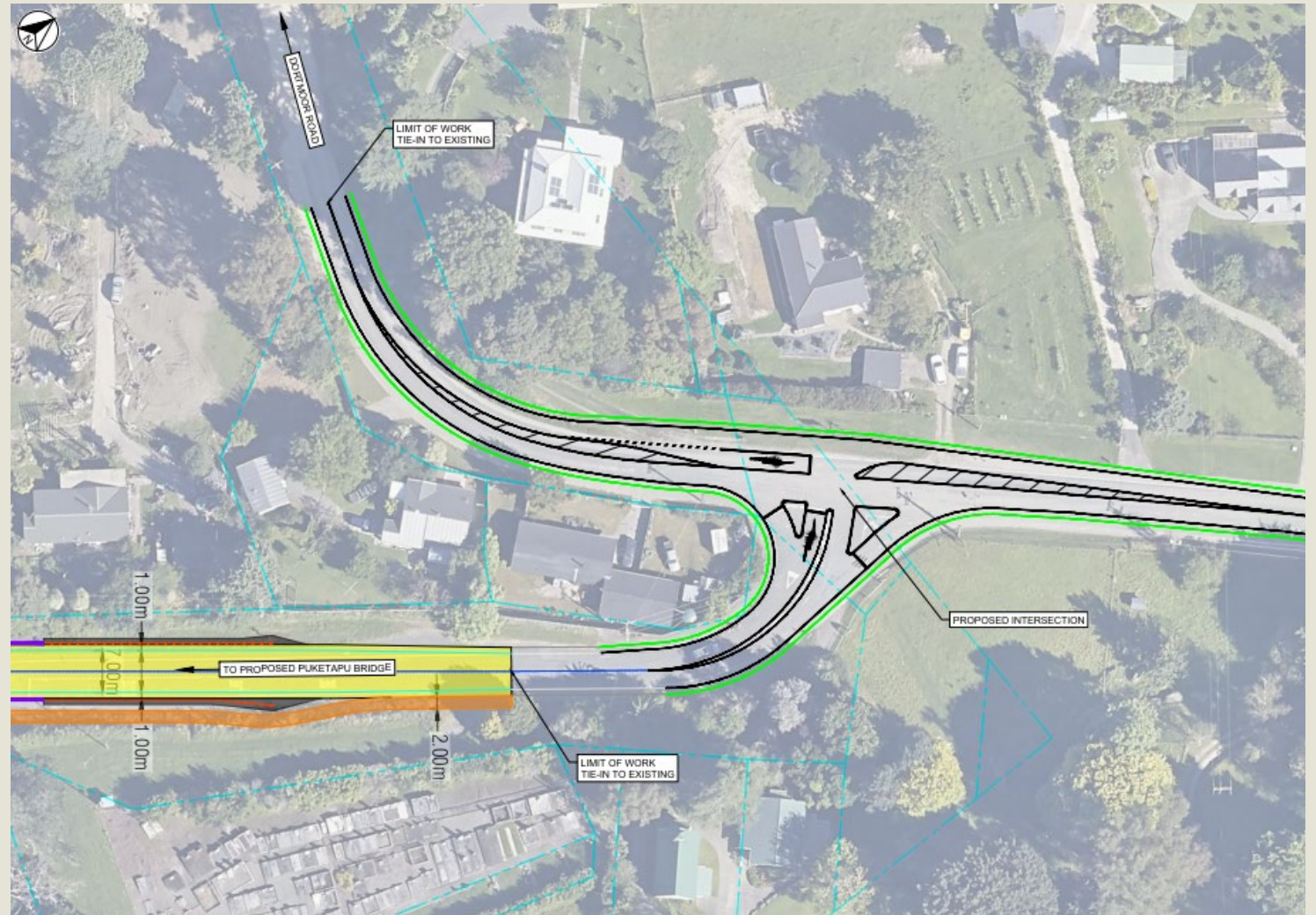
WHAT TO LOOK OUT FOR

- Fulton Hogan site establishment (April/May - Pending consaterials)
- Unison to provide temporary* relocation of power lines (Early May 2024)
- Construction timeline (Site Establishment begins April/May 2024, Bridge open May 2025).
- Increased project community communications
- More engagement opportunities for safety intersection improvements – July/August 2024

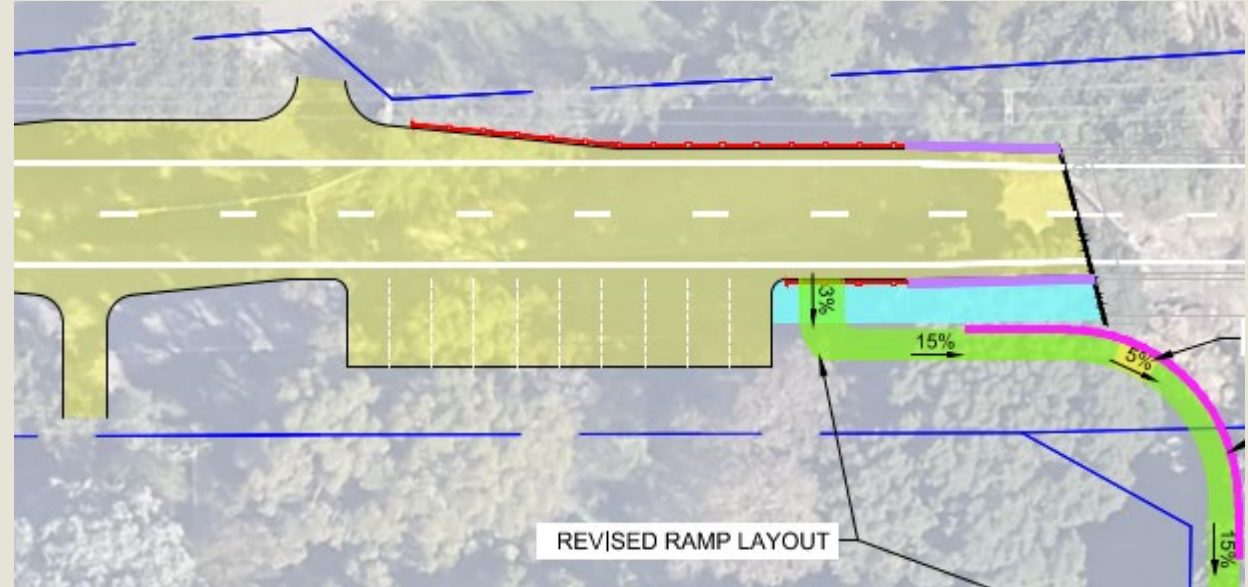
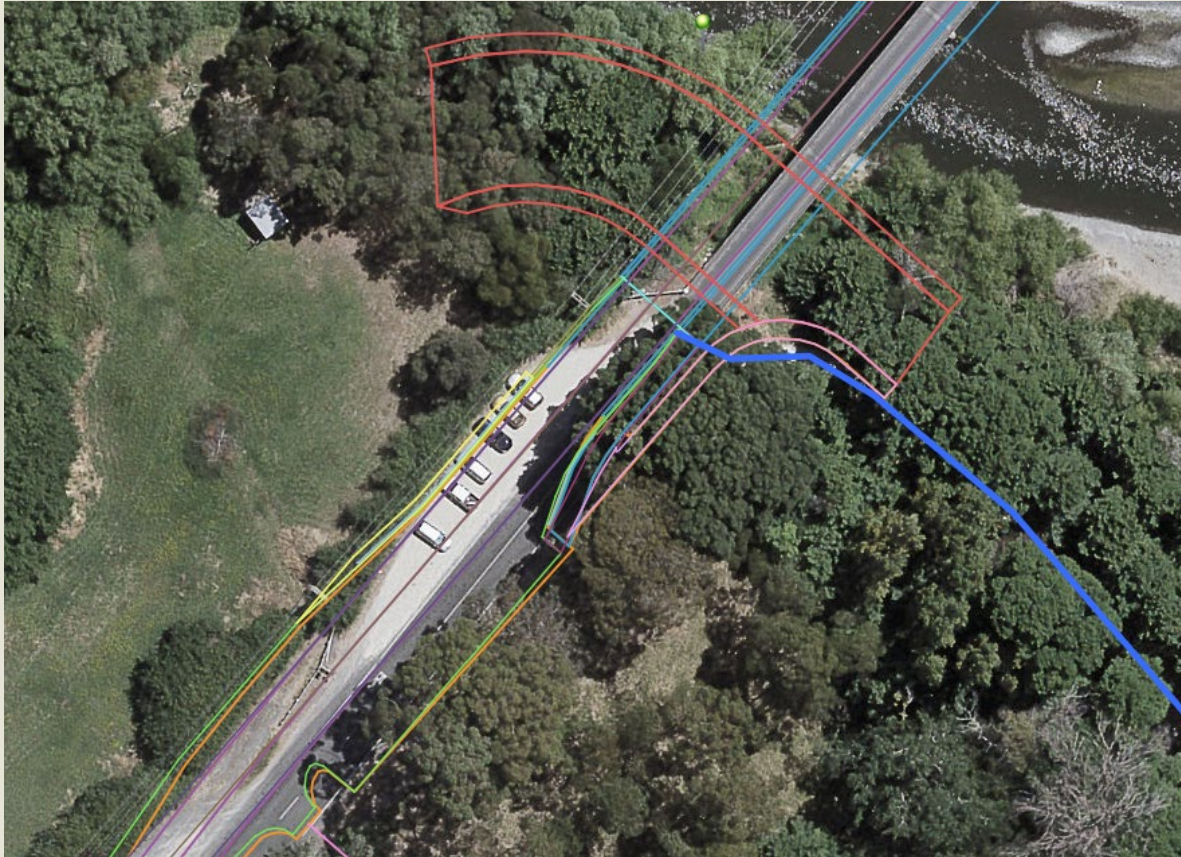


VICARAGE RD / DARTMOOR RD INTERSECTION

- Road widening on Dartmoor Rd
- Dedicated Right-hand turning bay
- Low level traffic islands
- Link into bridge and domain
footpath/cycle paths
- Safety signage and road markings
- Additional safety benefits under
consideration



CAR PARKING



To stay or to go?

This decision will be put to the Puketapu Community via online survey in the very near future



SAFETY IMPROVEMENTS
HDC –Bruce Conaghan

PUKETAPU SCHOOL CROSSING AND FOOTPATH PROJECT

Improvements:

- Kea crossing provided for safe crossing of Puketapu Road
- Footpath completed on western side of Puketapu Road

Progress:

- Substantially completed



PUKETAPU RD / DARTMOOR RD INTERSECTION

Key concerns:

- Currently in optioneering phase – What's possible
- Speed of vehicles turning left from Puketapu Road onto **Dartmoor Road**
- Visibility at the shared path crossing point on Puketapu Road

Opportunity to slow vehicles down into the left-hand turn, increase safety for cycle path crossing and link to school crossing



DARTMOOR ROAD CROSSING POINT

Key concerns:

- Visibility at the shared path crossing point on Puketapu Road
- Steep unsealed approach grade to the shared path crossing point at Puketapu Road
- Challenges for shared path users to get across Dartmoor Road near the intersection with Puketapu Road

Opportunity to identify a suitable crossing point on Dartmoor Road between Vicarage Road and Puketapu Road



SPEED LIMITS

Key concerns:

- Speed on Puketapu Road past Puketapu School
- Speed in the vicinity of the crossing south of Puketapu

Next steps:

- Changes to speed limits in Puketapu will need to be compliant with the new government's amendments to the national Speed Limit Rule which have not yet been released.
- It has been indicated that the new Rule will implement variable speed limits on roads approaching schools during drop-off and pick up times.



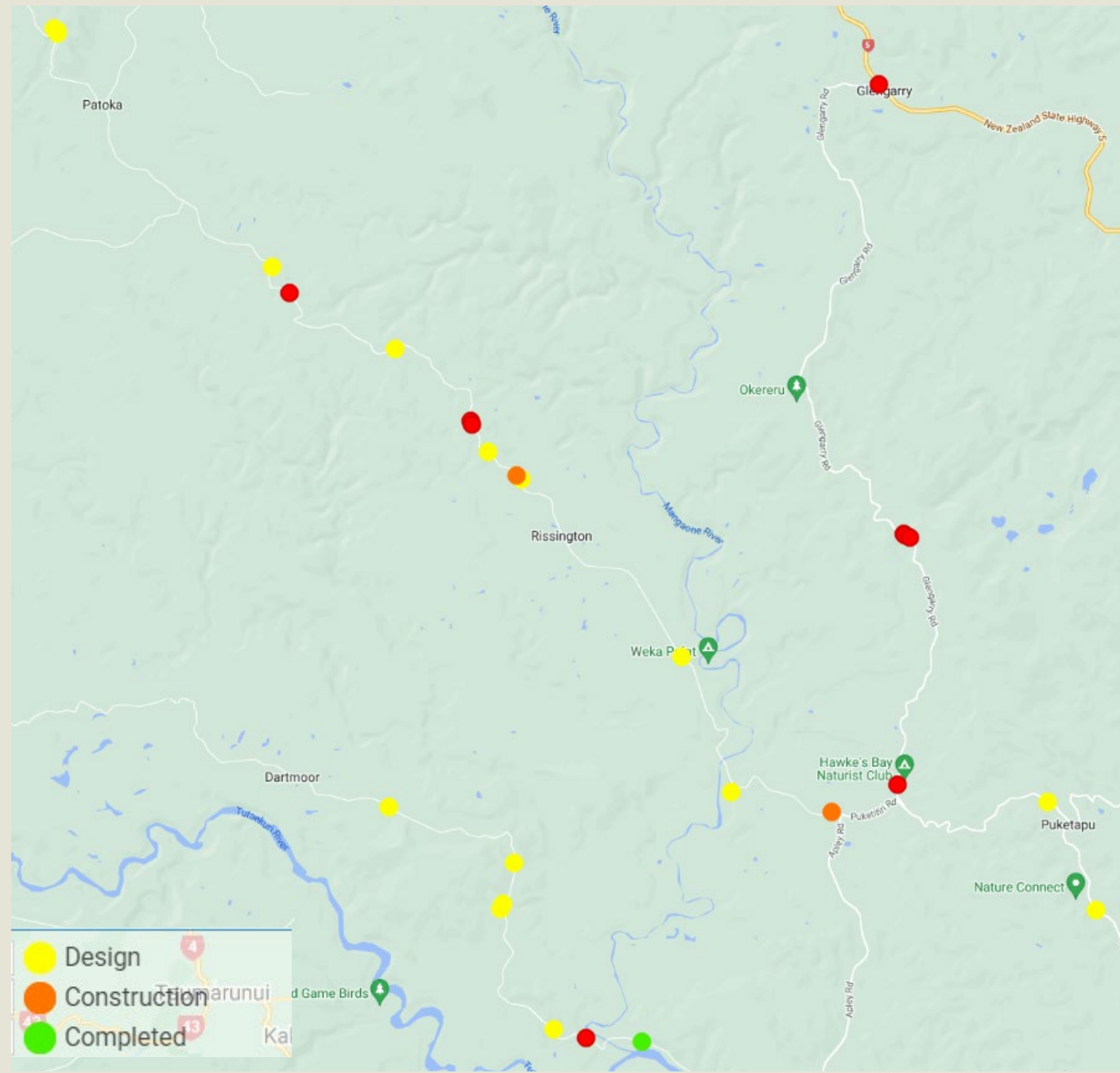


SLIP REPAIRS
HDC – FRANCOIS BLAY

SLIP SITES

Across the district, more than 800 slips were caused by the cyclone.

All 590 less complex slips have now been cleared and repairs made. There are a further 212 larger and more complex slips requiring investigation and major construction to repair.



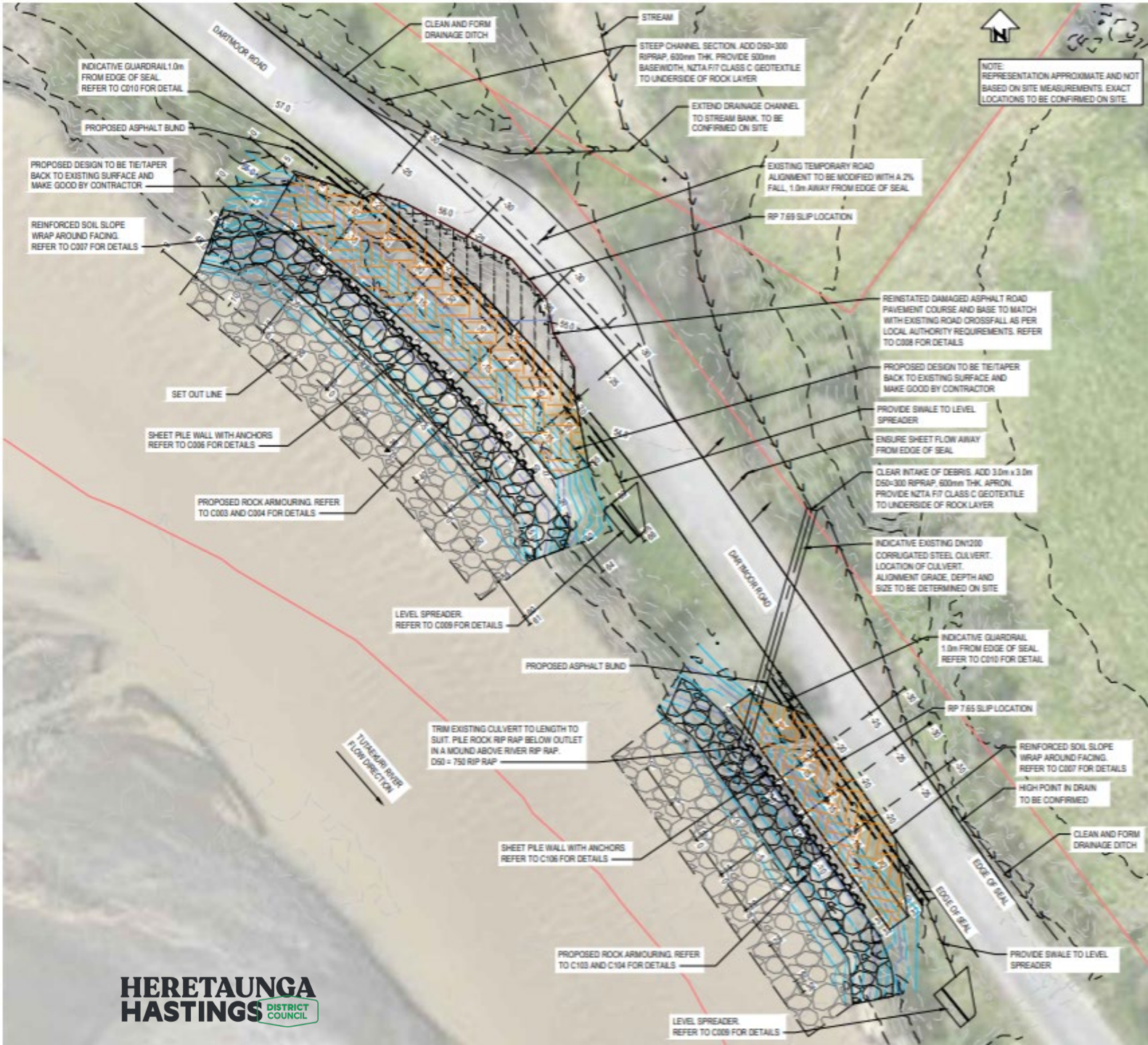
SLIP REPAIRS

Thirty-two of these 'tier 2 & 3' slips are on the following 3 roads:

- Dartmoor Road – 10 slips
- Puketitiri Road – 17 slips
- Glengarry Road – 5 slips



DARTMOOR RD SLIP



LEGEND	
	PROPOSED ROCK ARMOURING (EXPOSED)
	PROPOSED ROCK ARMOURING (BURIED)
	PROPOSED ROAD REINSTATEMENT
	PROPOSED INFILL
	PROPOSED CONTOUR
	PARCEL BOUNDARIES

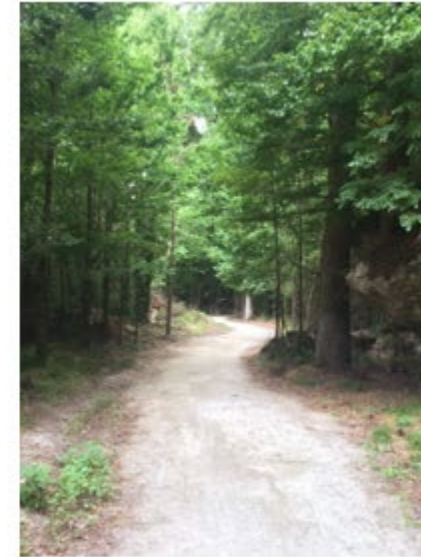


**HB TRAILS GREAT RIDE
HBRC - VICKI
BUTTERWORTH**



CLOSED SECTIONS (28)

Before Gabrielle

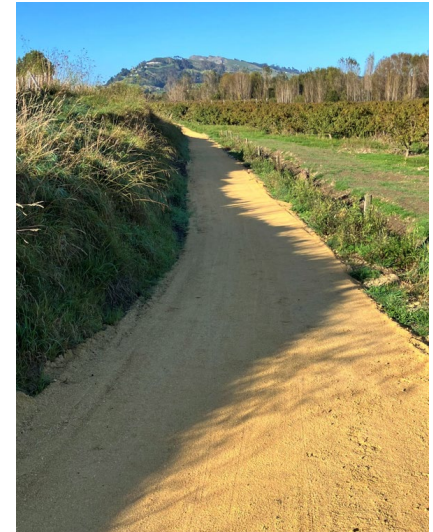
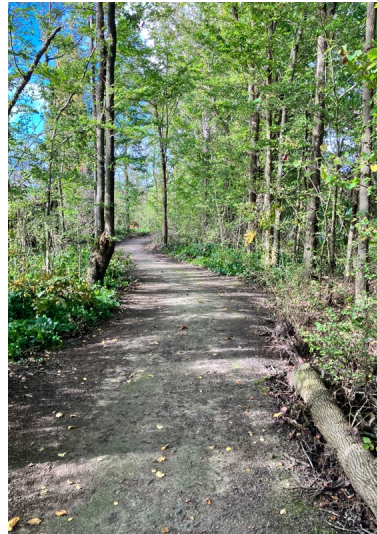
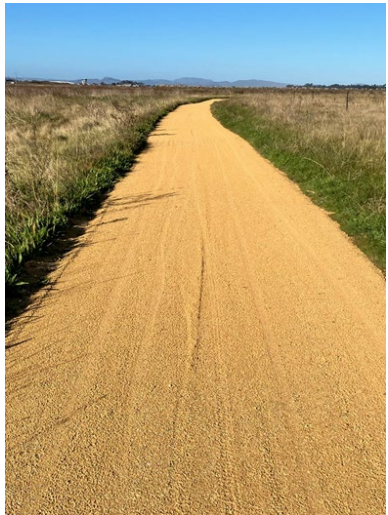


After



OPEN SECTIONS (32)

Damage and Repairs





PUKETAPU PARK: PROGRESS & PLANS
KIRSTY OOSTERKAMP - HDC
& BART LESLIE - HBRC

PUKETAPU PARK STAGE 1 - COMPLETE

Clean-up and restoration of key park facilities.

With the help of local contractors and the community the following has been achieved:

- Repairs to toilet and carpark facilities
- Repairs to playground equipment and surfaces
- Replacement of furniture & BBQ
- Clearance of additional parkland for public use
- Replaced cricket pitch



PUKETAPU PARK

NEXT STEPS – STAGE 2

To finish restoration of park and improve visitor experience to the park.

Funding from central government and local fundraising efforts means there is the opportunity to make the park more attractive to visitors by:

- Regrassing of rest of park
- Improving toilet facilities
- Relocate archery area
- Add more play equipment and shade
- New pathway link
- Other recreational activities





BETTER PUBLIC ACCESS SOUTHERN END

Improved public access to river and park with:

- Extension of pathway from village
- Additional carparking on northern side of river.



POSSIBLE NEW FEATURES NORTHERN END





QUESTIONS IN BREAKOUT GROUPS

**HERETAUNGA
HASTINGS**



HEI WHAKAKAPI - CLOSING
CR KEVIN WATKINS AND JACK MORRIS



SIGN-UP TO RECEIVE ONGOING UPDATES

**[WWW.HASTINGSDC.GOV.T.NZ/PERMANENT-
BRIDGE-REBUILDS/](http://WWW.HASTINGSDC.GOV.T.NZ/PERMANENT-BRIDGE-REBUILDS/)**



TĒNĀ KOUTOU KATOĀ
THANK YOU