

# HERETAUNGA HASTINGS

DISTRICT  
COUNCIL



**MATAPIRO COMMUNITY MEETING**  
**MARCH 2024**

**HERETAUNGA  
HASTINGS**



**NAU MAI, WHAKATAU MAI**

*Cr Ana Apatu*

# **MATAPIRO COMMUNITY MEETING**

## **AGENDA**

- 1. Introductions**
- 2. Hastings District Council Transportation Recovery Overview**
- 3. Matapiro Bridge update**
- 4. Whanawhana Bridge update**
- 5. Taihape Road update**
- 6. Hawke's Bay Regional Council Recovery Update**
- 7. Questions**
- 8. Closing**

---

# CYCLONE RECOVERY OVERVIEW & KAWEKA WARD HDC

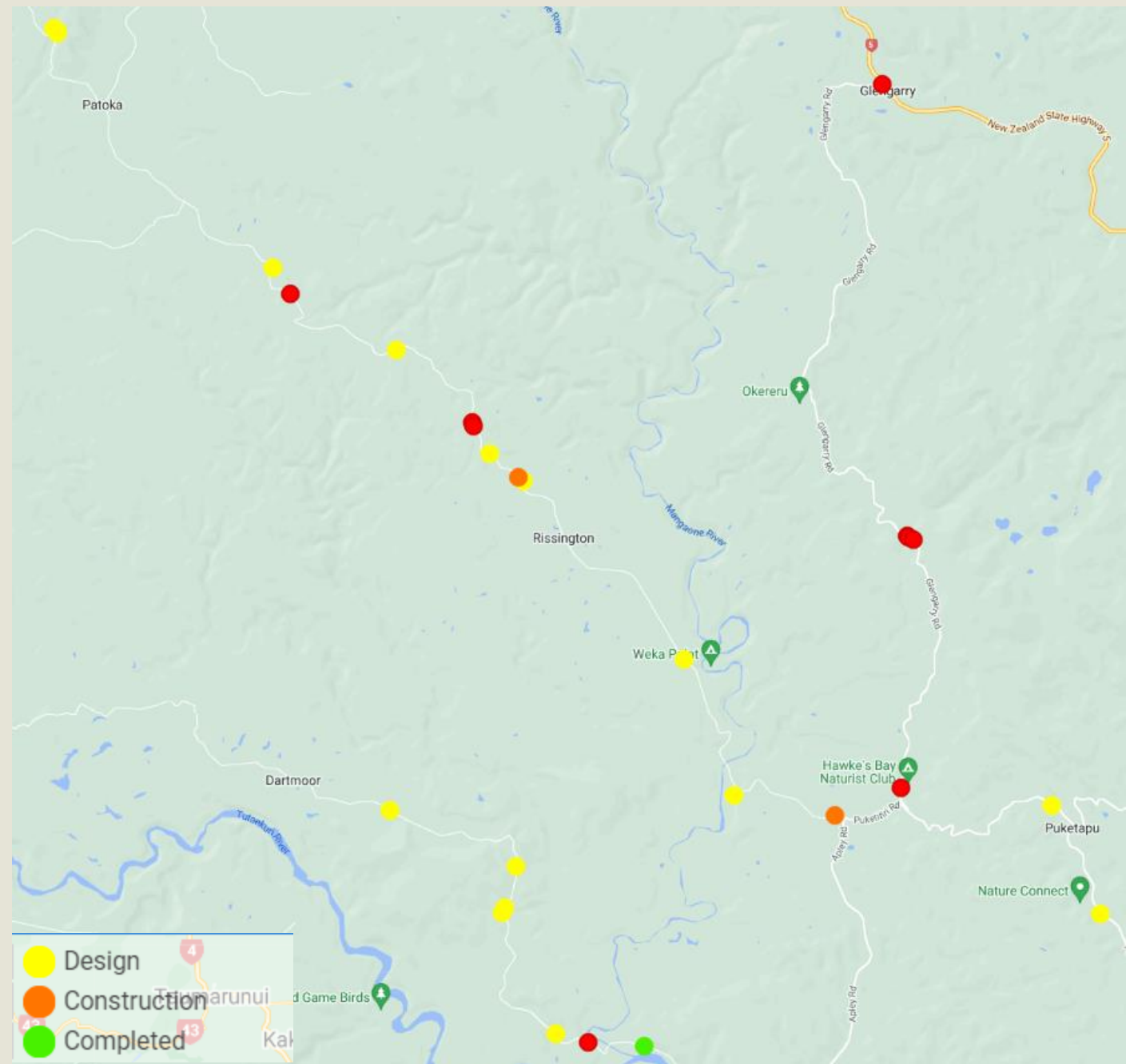
**HERETAUNGA  
HASTINGS**

# **CYCLONE RECOVERY - HASTINGS DISTRICT OVERVIEW**



# SLIP SITES

- Across the district, more than 800 slips were caused by the cyclone
- All 590 less complex (tier 1) slips have been cleared and repairs made
- There are a further 212 larger and more complex slips (tier 2 & 3) requiring investigation and major construction to repair
- 102 of these are in the Kaweka Ward



# SLIP REPAIRS

Twenty-six of these 'tier 2 & 3' slips are on the following three roads:

- Crownthorpe Settlement Road – 6 slips
- Taihape Road – 11 slips
- Whanawhana Road – 9 slips

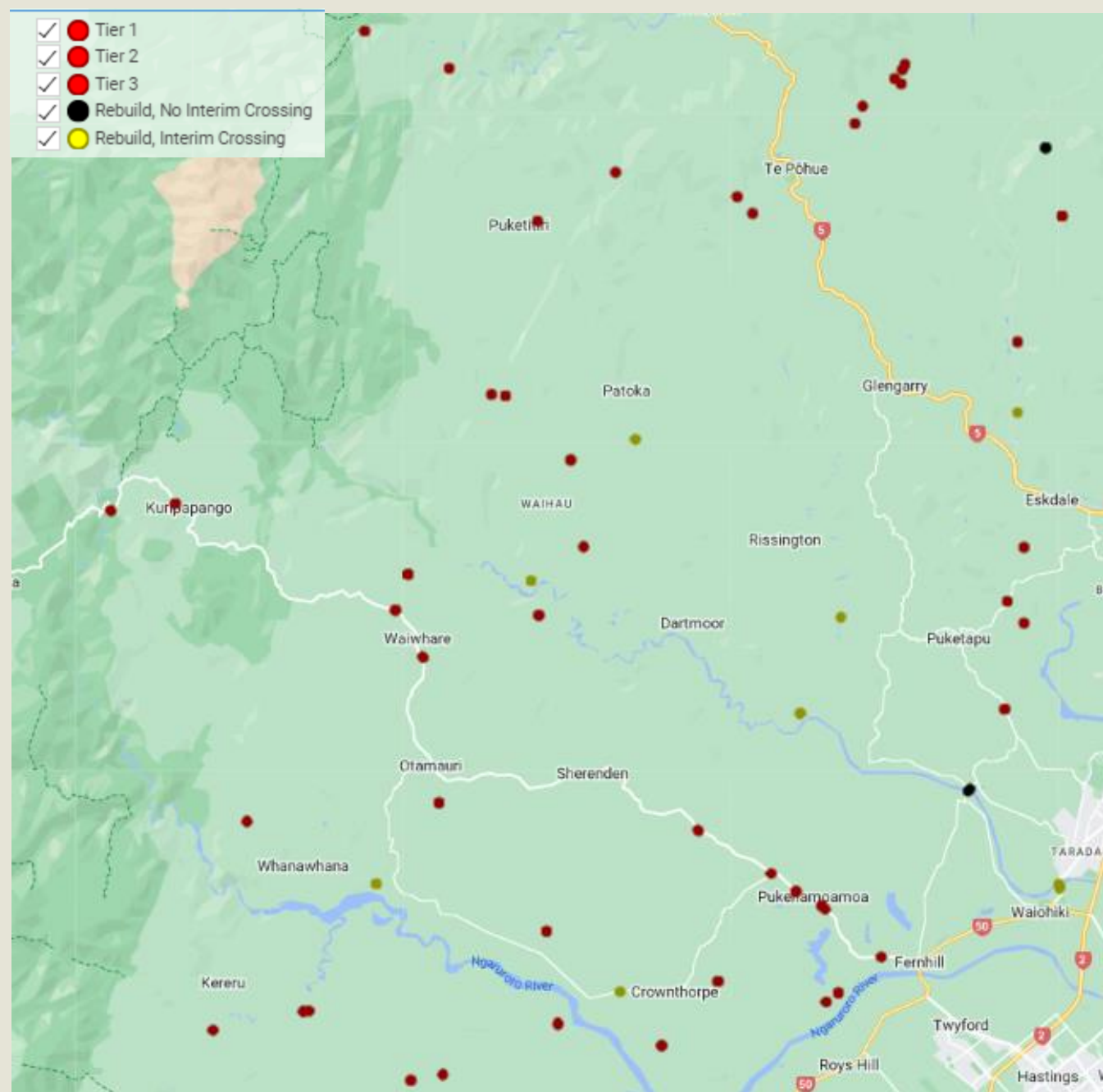


*Taihape Road, RP: 499999*



# BRIDGE SITES

- Across the district, 13 bridges & 5 large culverts were destroyed
- Another 80 bridges suffered significant damage
- 80 more bridges suffered less significant damage





# BRIDGE REBUILDS

In Kaweka Ward, 8 bridges and 1 large culvert require rebuild



*Whanawhana Bridge*



# BRIDGE REPAIRS

Of the 80 significant damaged bridges, 28 are in the Kaweka Ward:

- Waihau Road – 3 damaged bridges
- Taihape Road – 10 damaged bridges

A programme of prioritised repair works is underway.



*Crownthorpe Bridge, before and after repairs.*

# MATAPIRO ROAD

Matapiro Road has been significantly affected by heavy vehicle use in the response and recovery phase

Two sections in particular are damaged beyond resealing:

- Taihape Rd to just past Crownthorpe Settlement Rd
- RAPID 800 to the ACM quarry

Road needs to be rebuilt and strengthened. We are working to fast-track this work.

Physical works are likely to start after the 2024 winter. More routine maintenance & temporary works will be needed in the interim.

Please continue to report issues as they arise so that work can be allocated to available contractors as a matter of priority.



*Matapiro Road*



# NETWORK MAINTENANCE

- Increased volume of traffic, ongoing construction, silt recovery – damaging roads
- Ongoing programme of repair/maintenance/monitoring
- Specific issues, please report to HDC or police



*Matapiro Road: RP 8000 & 7850*





# MATAPIRO BRIDGE-WSP

**HERETAUNGA  
HASTINGS**

# **MATAPIRO BRIDGE UPDATE**



# BRIDGE REBUILD PROCESS



- HDC priority bridge due to temp crossing
- Follow NZTA/WK process
- Consideration of the overall traffic network
- Resilience
- Sustainability
- Working in the waterway





*Photo: 37.2m Concrete bridge built in 1955.*

# MATAPIRO REBUILD

- Previous bridge was 3 span 37.2m concrete bridge from 1955 (8 piles).
- Most resilient bridge location
  - No replacement
  - Like for like
  - **Same alignment with increased resilience**
  - Alternative routes (Upstream/Downstream)
- Replacement bridge requirements
  - **Increase bridge length**
  - **Increased bridge height**
  - **Less piles in waterway**





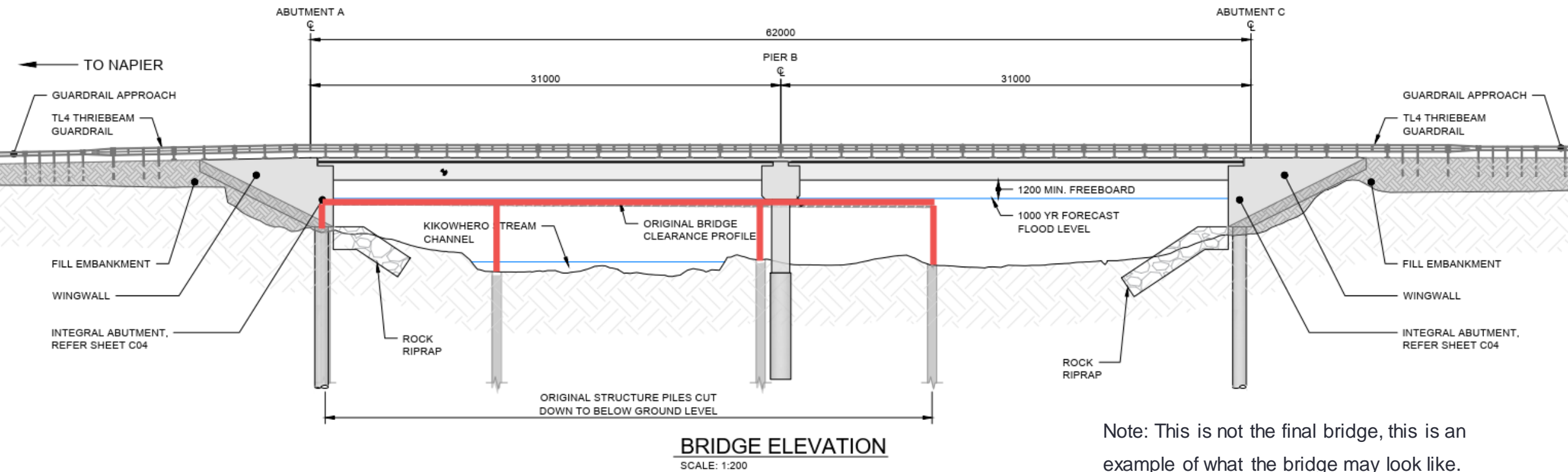


## WORKS COMPLETE TO DATE:

- Currently out for D&B tender with local bridge contractors.
- Design investigations in the background, procurement, and planning discussions with HBRC ongoing.

*Demolition, Feasibility Alignment reports, Options Reports, Ecology assessments, Archaeology Report, Land Contamination Testing & Reporting, Cultural Impact Assessment, Mana Whenua Engagement, Landowner agreements, Geotechnical Testing, Survey investigations, Hydrology & Hydraulics Reports, Economic Evaluations, Geometric investigations, Resource Consent Discussions*





# A CONFORMING DESIGN

- Replace on same alignment – 2 lanes
- Replace with a min 60m long bridge
- Maximum of 2 spans
- Replace with all current best practice standards.
- Design life – 100+ Years, Importance level 3.
- NZ Seismic Hazard model 2022.
- Designed to 1.2m freeboard including climate change. (1/1000 yr)
  - CG23 was 1/550 yr event according to NIWA reports.



Note: This is not the final bridge, this is an example of what the bridge may look like.



# WHAT TO LOOK OUT FOR

- Engineers completing regular checks on the temp structure.
- Further site geotechnical testing for earthquake requirements (10th April).
- Tender Award Q3.
- Construction timeline 9 – 12 months (Site Establishment begins late 2024) Q3 2025.
- Increased project community communications





**WHANAWHANA BRIDGE  
WSP**

**HERETAUNGA  
HASTINGS**

# **WHANAWHANA BRIDGE UPDATE**





# WHANAWHANA BRIDGE

Will follow the same bridge rebuild process.

- Most resilient bridge location
  - No replacement
  - Like for like
  - Same alignment with increased resilience
  - Alternative routes (Upstream/Downstream)
- Replacement bridge requirements
  - Increase bridge length
  - Increased bridge height
  - Less piles in waterway



# WHAT TO LOOK OUT FOR

- Engineers completing regular checks on the temp structure.
- Bridge Demolition before 1st May.
- Site geotechnical testing in 4-6 weeks.
- Increased project community communications.
- Bridge construction programmed on the outer year of the programme.







**TAIHAPE ROAD UPDATE  
GHD**

# TAIHAPE ROAD DESIGN

- Design has been completed for 9 out of the 11 sites
- The design for the remaining 2 sites are now near completion



# TAIHAPE ROAD TENDER

Taihape Road will be going to market in the next few weeks.



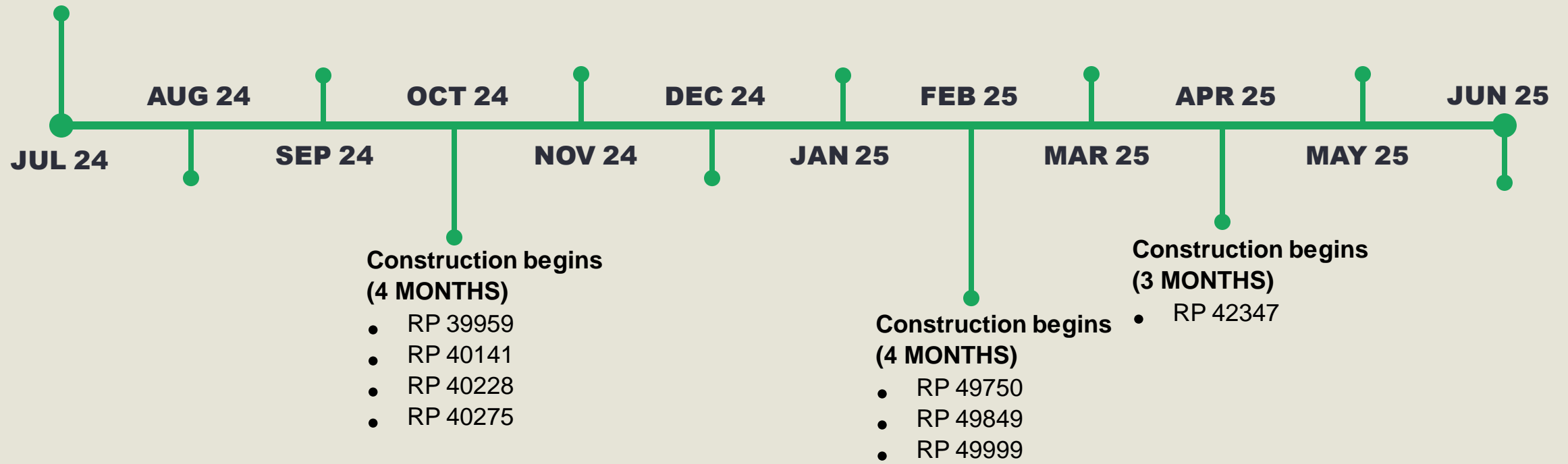
# TAIHAPE ROAD

## EXAMPLE CONSTRUCTION TIMELINE FY 24/25

Construction begins  
(3 MONTHS)

- RP 31382
- RP 45422
- RP 11230–11302

Exact construction dates are to be confirmed.



# BRIDGE 244 - PUKEHAMOAMO



## Before (left), temporary repair (above)

- Wing wall failure resulted in scour behind wing wall
- Temporary repair complete to reduce future scour
- Design near completed and permanent repair planned to be constructed this year.



# BRIDGE 203 – BLACKS

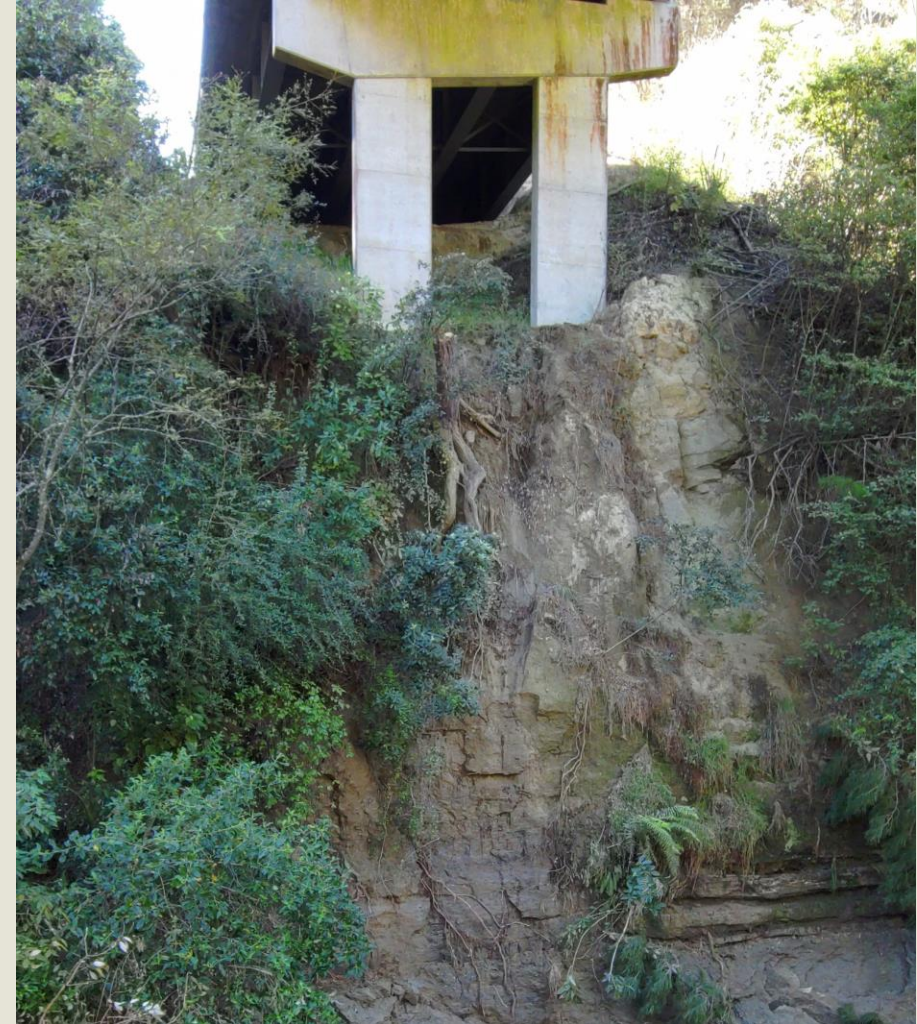


## Before (left), temporary repair (above)

- Scour below abutment, within wall, and road shoulder
- Temporary repair completed to allow 2-way traffic
- Permanent repair scheduled



# BRIDGE 203 – BLACKS



## Scour beneath bridge pier (left/above)

- Rope access inspection complete
- Assessment scheduled
- Ongoing monitoring scheduled



# BRIDGE 252 - SWAMP CUTTING



**Before (left), after (above)**

- Void developed under the abutment
- Emergency work completed in October 2023
- Scour protection design in progress





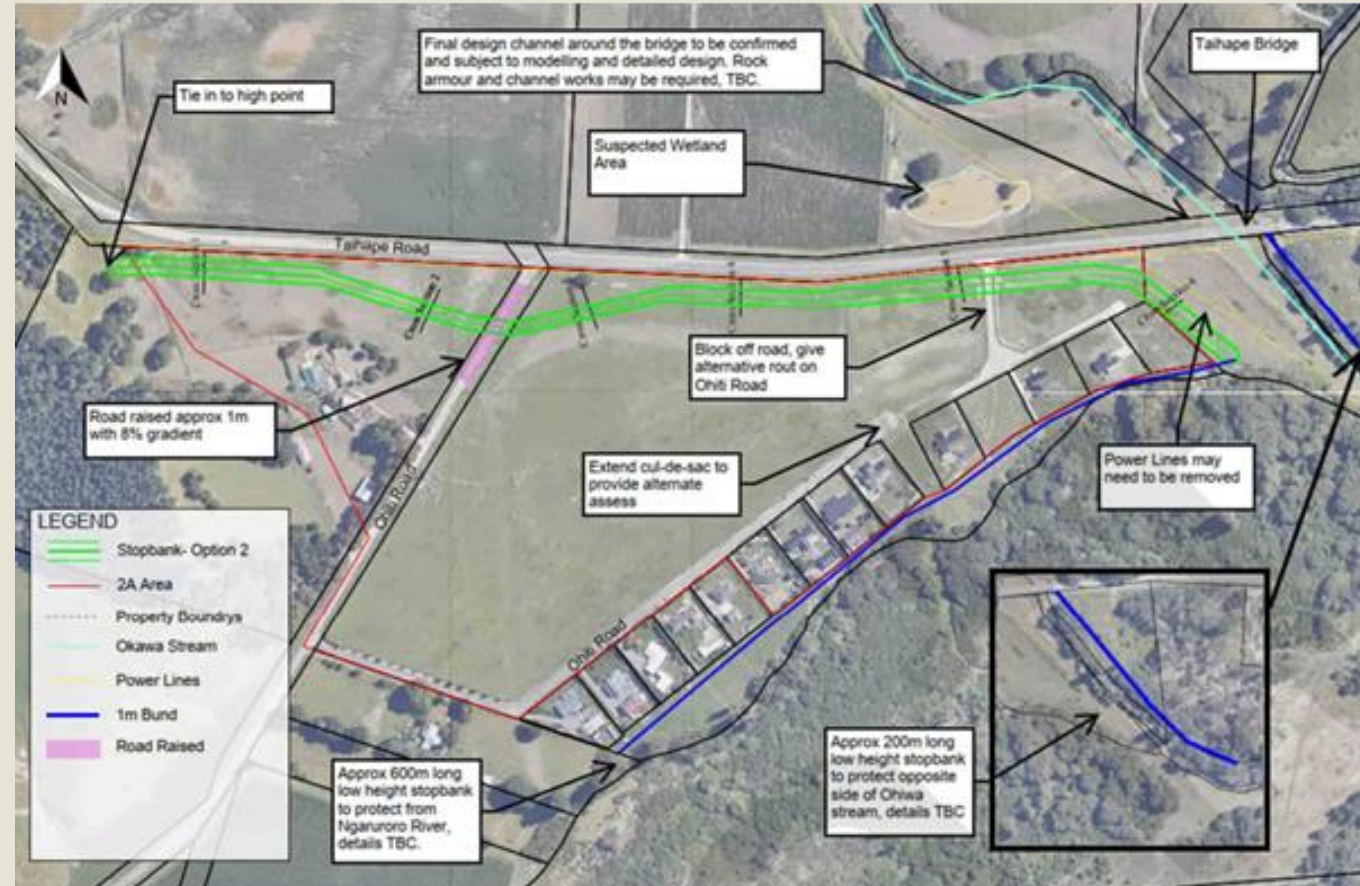


# **HBRC RECOVERY UPDATE**

## **HBRC**

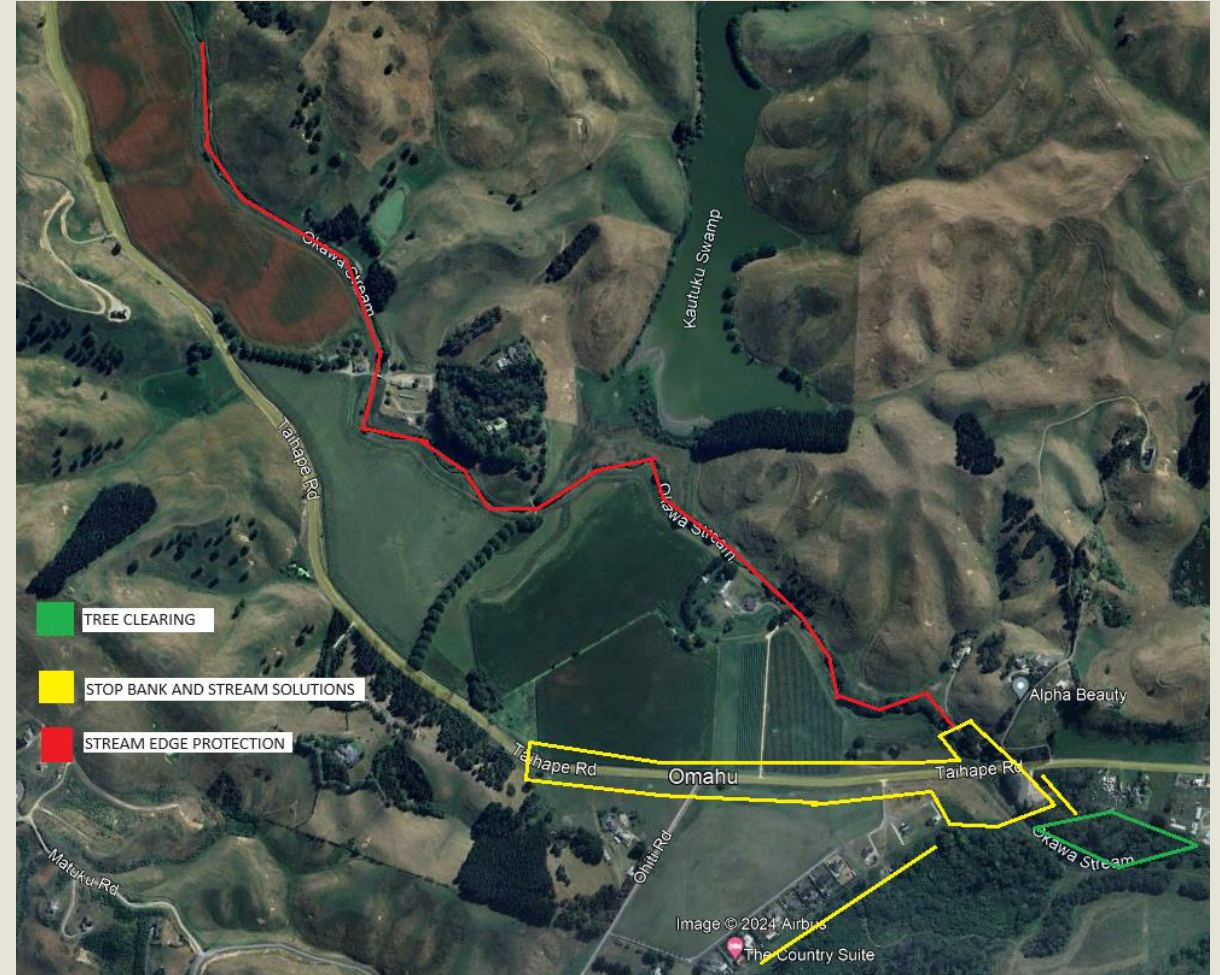
# HBRC FLOOD RESILIENCE PROJECT

- Ohiti Road Flood resilience project
- Removal of trees
- Assessment and scoping of edge protection
- Hydrological modelling
- Stream work and rock armouring (subject to hydrological modelling)



# HBRC AREAS OF WORK

- **Consultant:** Hydrological Modelling
  1. Walkover/site visit 27th March
  2. Report (6 weeks)
- **Operations:** Tree clearing (3 months)
- **Projects Team:** Stop bank stream solutions
  1. Stop bank construction (November 2024)
  2. Stream works (September 2024)
- **Projects Team:** Ohiwa Stream Maintenance and edge protections.
  1. Assessment (4-6 weeks)
  2. Stream works August 2024





# QUESTIONS IN BREAKOUT GROUPS

**HERETAUNGA  
HASTINGS**



**HEI WHAKAKAPI - CLOSING**  
Cr Ana Apatu



**SIGN-UP TO RECEIVE ONGOING UPDATES**

**[WWW.HASTINGSDC.GOV.T.NZ/PERMANENT-  
BRIDGE-REBUILDS/](http://WWW.HASTINGSDC.GOV.T.NZ/PERMANENT-BRIDGE-REBUILDS/)**



**TĒNĀ KOUTOU KATOĀ  
THANK YOU**